



TRAILARMOR.COM
839 HWY 2 CORINTH, MS 38834
(662) 233-5700

Installation Instructions

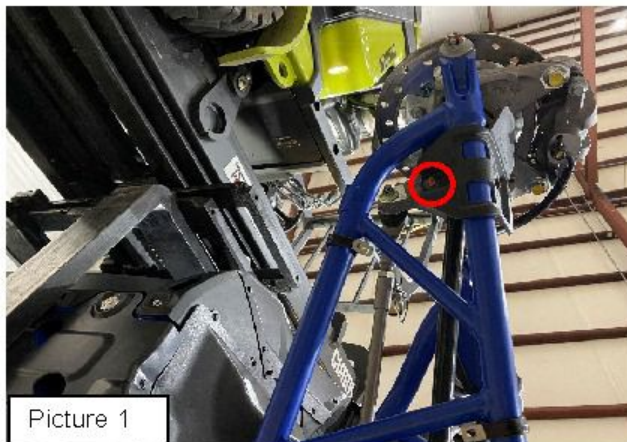
Installation Instructions for Honda Talon R Fox Live Valve iMPact A-Arm Guards TA012ARMIMPFG-HTRFLV

Warnings and Product Liability Disclaimer

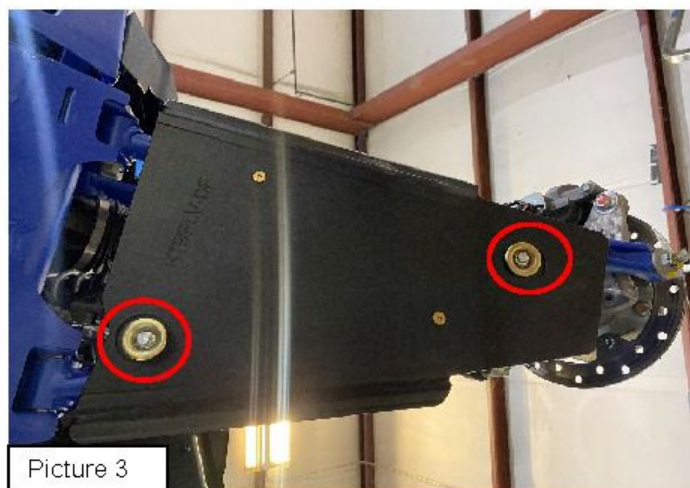
This product is intended to be used as a cosmetic accessory under normal equipment operation and should not be depended upon or used as a safety device. Manufacturer assumes no liability for personal injury or equipment damage as the result of use or installation of this accessory. User assumes all risk. User should carefully read all instructions prior to installation.



- A. Remove the bolt on the under side of the OEM guard. Do this for each side. (Picture 1).
- B. On the Driver side a-arm place (2) 1 1/4" P-clamps on the locations shown in (Picture 2).



- C. Once Place the Driver side a-arm guard (HTRFLV-DF) on the Driver side a-arm. Then when aligned place (2) M6 x 40mm bolts and (2) bowl washers in the locations shown in (Picture 3). **Loosely tighten.**



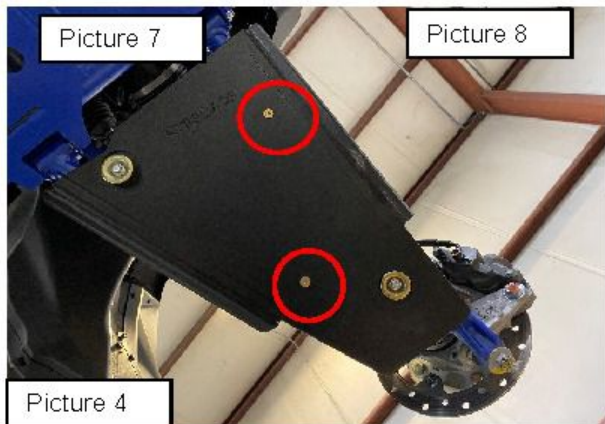


TRAILARMOR.COM
839 HWY 2 CORINTH, MS 38834
(662) 233-5700

Installation Instructions

Installation Instructions for Honda Talon R Fox Live Valve iMPact A-Arm Guards **TA012ARMIMPFG-HTRFLV**

- D. Place (2) 1 ¼" Flat head screws and (2) nylock nuts through the (2) previously installed p-clamps. (Pictures 4 & 5).
- E. Repeat steps A-D for the opposite side.



- F. See (Picture 6) for Final Install.

