



Made for first. Built to last.

DISCLAIMER:

PRODUCTS MADE BY L AND W FAB AND MACHINE INC. ARE INTENDED TO FIT YOUR STOCK UTV UNLESS OTHERWISE SPECIFIED. INSTALLING, MODIFYING, OR REMOVING ANY COMPONENTS (FACTORY OR AFTERMARKET) NOT SUPPORTED BY L AND W AND THE INSTRUCTIONS HEREIN WILL VOID YOUR WARRANTY. FOR MORE INFORMATION ON INSTALLATION, WARRANTY, OR PRODUCT USE PLEASE CALL US AT (770) 445-9778

## HONDA TALON DB RADIUS RODS

Fitment: 2019-CURRENT Talon X/R

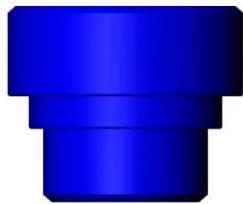


INSTALLATION MANUAL

# Parts List:

Item #	Description	Qty.
1	UPPER RADIUS ROD	2
2	LOWER RADIUS ROD	2
3	MISALIGNMENT BUSHING	8
4	SPACER	8

## MISALIGNMENT BUSHING/SPACER REFERENCE



MISALIGNMENT  
BUSHING



SPACER



# Installation:

## STEP 1:

Jack machine up and remove wheels.

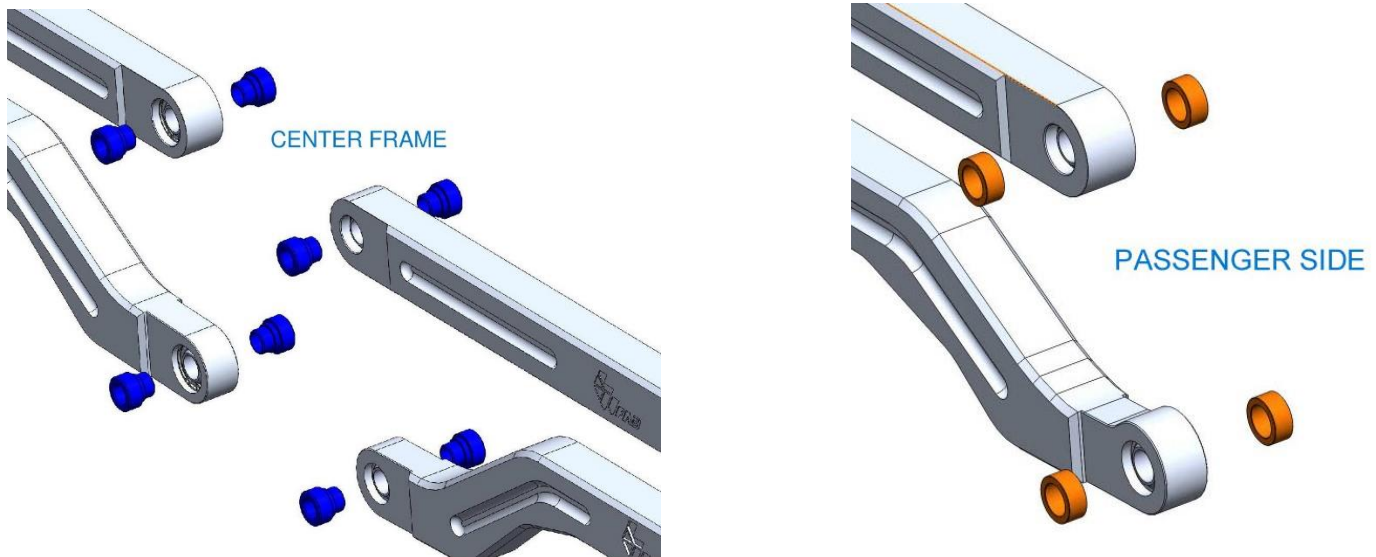
## STEP 2:

Using a 18mm socket and wrench, remove the factory radius rods and prepare to install your new L&W Rods.

## STEP 3:

Layout the supplied misalignment bushings and spacers with your new arms. Refer to Figure 1 below for placement of Misalignment bushings and spacers. The spacers will go to the wheel side.

Figure 1



## STEP 3:

With the misalignments and spacers layed out, install the rods on machine using the factory bolts/nuts you removed in step 1. The bushings are designed to be a very snug fit. A dead blow hammer and line up bar will help with persuading the arms into place.

STEP 4:

With everything in place, and bolts started, torque all bolts to 80 ft/lb.

STEP 5:

Reinstall wheels. Be sure to drive the machine around to let the suspension settle.



**THANK YOU FOR CHOOSING L&W FAB!**