



TRAILARMOR.COM  
839 HWY 2 CORINTH, MS 38834  
(662) 233-5700

# Installation Instructions

## Trail Armor Kawasaki KRX 1000 Mud Flap Fender

### Extensions

#### TAMFFE-KRX

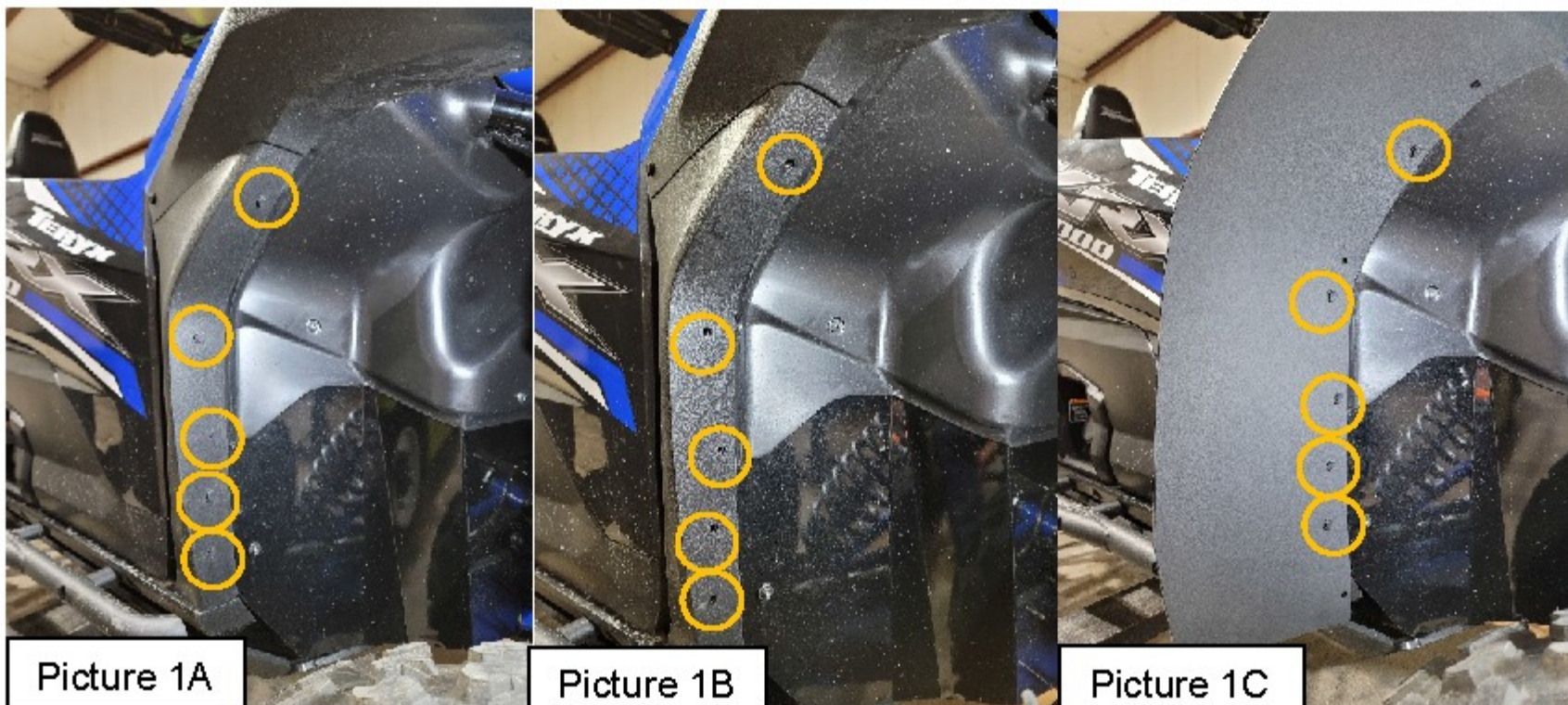
##### Warnings and Product Liability Disclaimer

This product is intended to be used as a cosmetic accessory under normal equipment operation and should not be depended upon or used as a safety device. Manufacturer assumes no liability for personal injury or equipment damage as the result of use or installation of this accessory. User assumes all risk. User should carefully read all instructions prior to installation. All Trail Armor products are designed, engineered, and fit to new vehicles and their specifications. Damage, modifications, and extreme wear may cause and require modifications to the product and/or your vehicle to insure proper fitment.



### Instructions

#### FRONTS



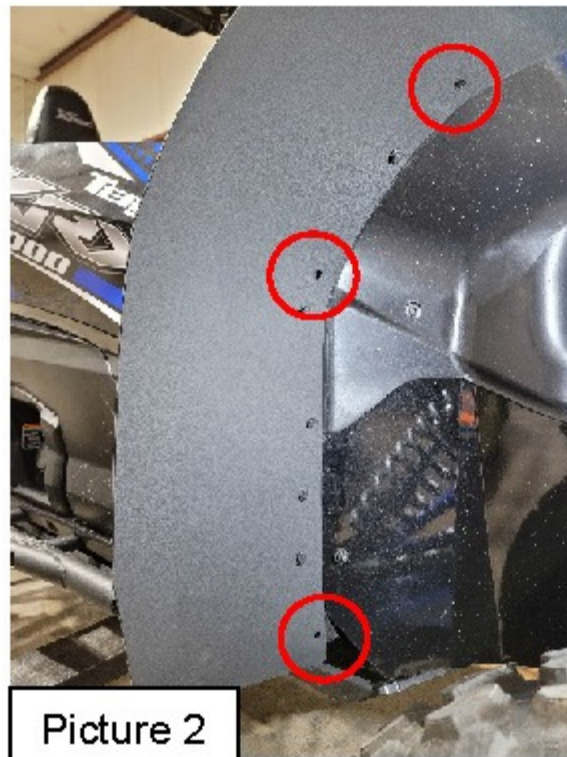




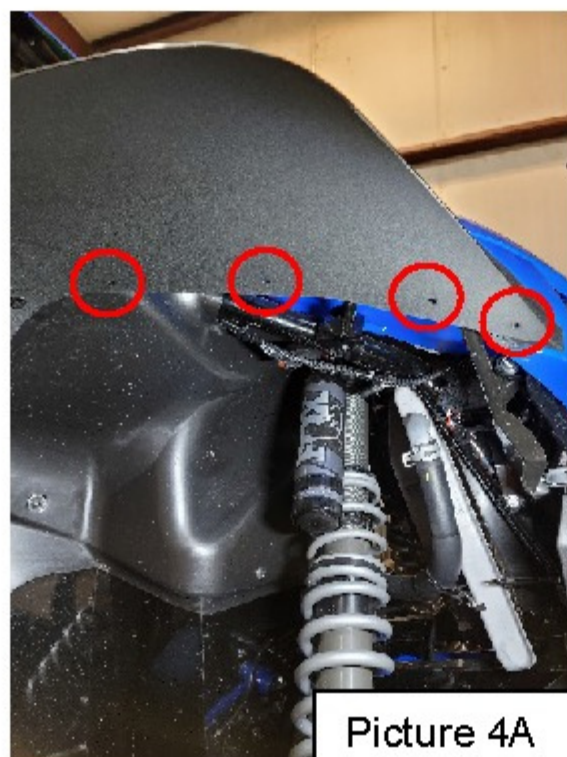
TRAILARMOR.COM  
839 HWY 2 CORINTH, MS 38834  
(662) 233-5700

# Installation Instructions

- A. Before starting installation of the front extensions, remove (5) OEM push pins (shown in **YELLOW**). See Picture 1A and 1B. Retain all OEM push pins as they will be reused. Locate the passenger side front fender extension. Holding the extension at the front of the vehicle, align the mounting holes of the extension with the holes where the OEM push pins were removed. Reinstall the OEM push pins back into place. Starting at the bottom and work your way up. (See Picture 1C).
- B. Next you will need to get a drill and a 5/16 drill bit and drill (3) holes (See Picture 2). Locate (3) supplied push pins and install in the previous drilled holes (See Picture 3).



- C. Next locate (4) supplied #10 x 3/4" Phillip head screws and (4) supplied Speed nuts. Be sure the inner edge of fender extension is flush with the OEM fender flare's inner edge. Start at the predrilled hole closest to the last installed push pin and work your way toward the front of the machine installing the (4) #10 x 3/4" Phillip head screws and (4) Speed nuts. (See Picture 4A and 4B).



- D. Repeat Steps A thru C for Driver Side.





TRAILARMOR.COM  
839 HWY 2 CORINTH, MS 38834  
(662) 233-5700

# Installation Instructions

## REARS

- E. Before installation of the rear fender extension, locate the OEM push pin (Shown in Picture 5A and 5B). Remove and retain. Locate the Passenger Rear Fender Extension. Holding the extension into position, Reinstall the previously removed OEM push pin thru the extension and into the OEM hole. (See Picture 5C).



- F. Next you will need some type of clamp to help hold the fender extension against OEM plastic. (See Picture 6A) Make sure that the inner edge of the fender extension is lined up with the inner edge of the OEM fender flare. Once lined up clamp in place. Then insert (1) #10 x 3/4" Phillip head screw into the predrilled hole in fender extension and into the OEM fender flare. (See Picture 6B and 6C) **TIP: Since this bend in the fender extension is so tight you may want to use a heat gun or hair dryer to make sure the fender extension follows the contours of the OEM Fender.**







TRAILARMOR.COM  
839 HWY 2 CORINTH, MS 38834  
(662) 233-5700

# Installation Instructions

- G. Locate (1) #10 x 3/4" Phillip head screw and insert in the next predrilled hole in fender extension. Making sure the inner edge of the fender extension is aligned with the inner edge of the OEM fender flare. (See Picture 7A).
- H. Remove your clamp and move back to the next predrilled hole in the fender extension. Make sure fender extension is aligned with the OEM Fender flare and clamp your clamp in place. Insert (1) #10 x 3/4" Phillip head screw into the predrilled hole into the OEM Fender Flare. (See Picture 7B).
- I. Repeat step H for the next 4 predrilled holes. (See Picture 7C)



- J. Remove your clamp. Align the fender extension with the contours of the OEM fender flare and clamp in place. (See Picture 8A thru 8C).







TRAILARMOR.COM  
839 HWY 2 CORINTH, MS 38834  
(662) 233-5700

# Installation Instructions

- K. Locate (2) #10 x 3/4" Phillip head screws and insert (1) into each predrilled hole (See Picture 9A).
- L. Next locate (9) Speed nuts (See Picture 9B) and install them on the back side of the installed Phillip head screws. (See Picture 9C)



Picture 9A



Picture 9B



Picture 9C

- M. Next you will need to get a drill and drill a 5/16 hole (See Picture 10A). Locate (1) supplied push pin and install in previously drilled hole. (See Picture 10B).
- N. Repeat Step M for the next (3) holes. (See Picture 10C) Making sure to keep the fender extension aligned with the edge of the OEM fender.



Picture 10A



Picture 10B



Picture 10C

- O. Repeat Steps E thru N for the Driver Side.