



STREET-LEGAL TURN-SIGNAL KIT

w/Sequential LED Turn-Signals & Taillight Integration

INSTALLATION

250-SWTSL-XPD

XPEDITION



2024-Up Polaris® Xpedition



Please read and understand these instructions completely before installation to avoid possible injury, or damage to the accessory or vehicle.

WARRANTY DISCLAIMER

SSV Works offers a warranty on all products manufactured by SSV Works, covering defects in material or workmanship. For Kicker products included with SSV Works systems, SSV Works handles all warranty claims directly, eliminating the need to contact Kicker separately. Warranty coverage is as follows:

- Enclosures/Panels (SSV Works): Limited Lifetime Warranty
- SSV Works Speakers and Subwoofers: Limited Lifetime Warranty
- Kicker Speakers: Limited 3-Year Warranty
- Kicker Subwoofers: Limited 1-Year Warranty
- SSV Works Amplifiers: Limited 2-Year Warranty
- Kicker Amplifiers: Limited 2-Year Warranty
- SWITCH Works Products: Limited 3-Year Warranty

This warranty does not cover damage caused by misuse, improper installation, or unauthorized modifications. For warranty claims, please contact SSV Works directly for assistance.

XPEDITION
STREET-LEGAL TURN-SIGNAL KIT
CONTENTS

TOOLS NEEDED	1
PARTS LIST	1
FRONT END DISASSEMBLY	2-3
INSTALLATION - CONTROLLER	4
INSTALLATION – CLUSTER PIN HARNESS	4
INSTALLATION – FRONT TURN SIGNALS	4-5
INSTALLATION – TAILLIGHT HARNESS	5-6
INSTALLATION – HORN	6
INSTALLATION – BRAIN / CONNECTIONS	7
SYSTEM TEST	7

XPEDITION
STREET-LEGAL TURN-SIGNAL KIT
PARTS LIST

VEHICLE SPECIFIC TURN SIGNAL KIT



(A-SW-TSPCBAV2)

Tango2 Turn
Signal Module



(B-H3271)

Tango2 Turn Signal
Main Harness.



(A-SW-TSPCBCON)

Tango2 Turn Signal



(250-RZ346-TSH)

Street Legal Turn Signal Harness



(B-H2813)

Tango2 Front Turn Signal
LED Lamps (x2)



(B-H3836)

Harness, Turn Signal LED
Y-Splitter (pair)



(B-SW-SS45)

Stick-On Sequential DRL/Turn
Signal Strip, 45cm



(A-SW-HRN)

Horn Assembly, 500hz,
Bracket & WP Sock



(B-H3861)

Harness, SW-TS Tail
Light Extension,
Driver, 2 ft

TOOLS NEEDED

- Panel popper
- 10mm socket
- 7/16 socket
- T40 Torx
- T30 Torx
- T25 Torx



818-991-1778

SUPPORT@SSVWORKS.COM

SWITCHWORKS
OFFROAD.COM

XPEDITION STREET-LEGAL TURN-SIGNAL KIT FRONT END DISASSEMBLY



1 **Unlock** the two (2) twist-locking nuts on the front grille, then **lift** the grille up and out of the way.



2 **Pull** down and out on the two (2) rubber locks that secure the hood, then **lift** the hood up and out of the way.



3 **Open** the windshield. Using a 10mm socket, **remove** the windshield latch on the dash by removing the three (3) bolts and two (2) push pins.



4 **Remove** the center top dash panel by lifting it up and out.



5 Remove the five (5) T-27 Torx screws from the top of the dash panel.



6 With a panel popper, remove the two (2) driver-side HVAC vents. They are secured with plastic speed clips.



7 Remove the two (2) passenger-side HVAC vents. Open the glove compartment, then remove the two (2) plastic push pins next to the glove compartment latch. Also remove the plastic push pins behind the four (4) HVAC vents that were removed.



8 Remove the driver and passenger-side A-pillar covers. Release the windshield piston, then remove the two (2) T30 bolts and the 11mm windshield piston bolt.

NOTE! Either fully remove the windshield, or secure it in place.



9 The dash is secured by two (2) hidden panel fasteners. To access them, remove the exterior trim by extracting the one (1) panel fastener located between the door jamb.

XPEDITION STREET-LEGAL TURN-SIGNAL KIT



To access the hidden panel fastener, pull the side panel back just enough to reach and remove the push pin.

NOTE! If the panel is too tight, remove the T40 Torx screw to provide additional clearance.



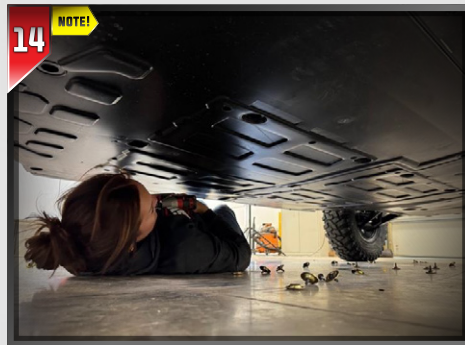
With all hardware removed, lift the end of the dash panel to disconnect the tweeters, if equipped.



Now you can lift the top dash panel up and out.

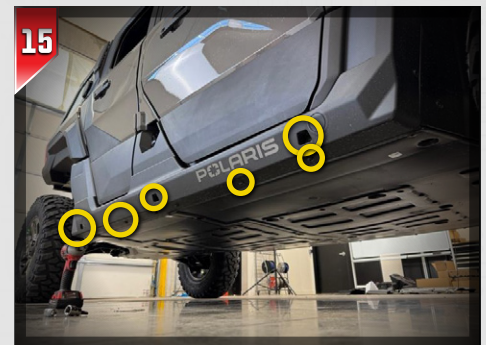


We've found it much easier to **drop the skid plate** instead of removing the **rocker panel**. This gives you clear access to the rocker channel to route the tail light harness.



Starting at the rear of the vehicle, work forward and remove the 10mm bolts and T40 bolts from the skid plate.

NOTE! Because the bottom rocker hardware has not been removed, the skid plate will remain in place and will not drop yet.



Now remove the ten (10) T40 bolts from the passenger-side rocker panel. There are six (6) on the bottom, three (3) on the side and one (1) behind the front tire.



Remove the three (3) T40 bolts in the front wheel well.



Now pry the bottom of the skid plate outward, allowing the passenger side to drop free.



Move to the taillight and remove the two (2) T25 bolts securing the taillight. Pull the taillight out, then disconnect it from the factory harness. Repeat on the driver-side taillight.



818-991-1778

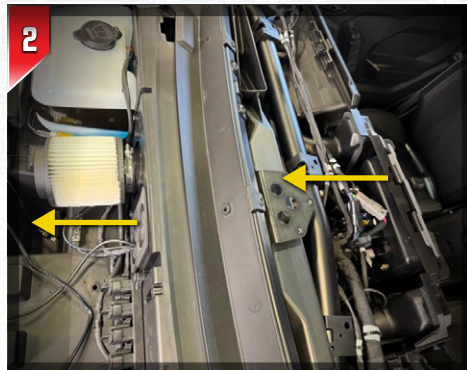
SUPPORT@SSVWORKS.COM

SWITCHWORKS
OFFROAD.COM

INSTALLATION - CONTROLLER

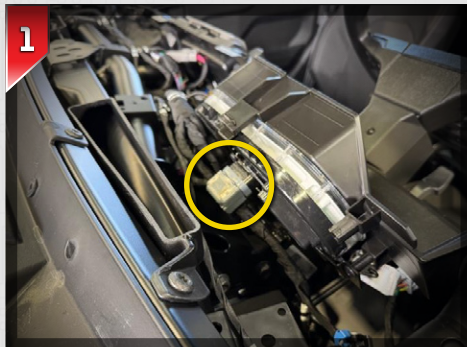


Choose the desired rocker switch location for your controller. Pop the cover out, then feed the **B-H2940** controller harness into the opening and snap the controller into place.



Feed the controller cable through the firewall. It may be easier to fish a wire through first, then use it to pull the cable into the hood cavity.

INSTALLATION - CLUSTER PIN HARNESS



Unplug the instrument panel connector. Release the plastic clip located under the connector, then disconnect it. Be careful not to break the clip.

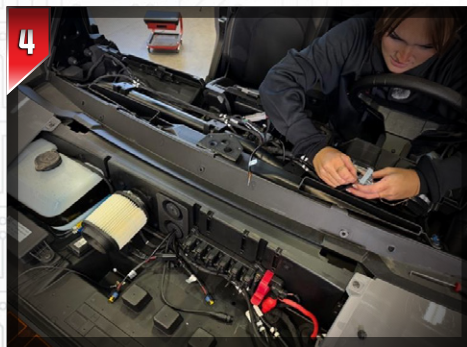


Locate the two (2) one (1)-pin harnesses: one labeled **Passenger | Pin-6** and the other labeled **Driver | Pin-7**. Starting from the hood side, feed the pins through the firewall and route them to the cluster connector.



Remove the two blue caps. Connect **Pin-6** to pinout six (6), and **Pin-7** to pinout seven (7). Push each pin in until you feel it click into place.

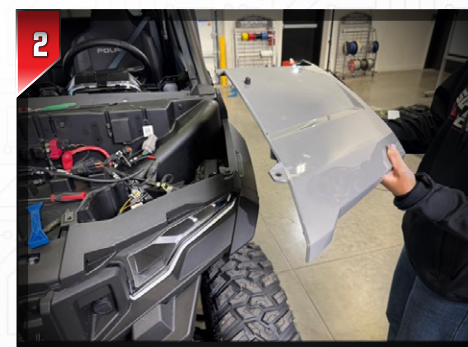
INSTALLATION - FRONT TURN SIGNALS



Close the connector back up, then plug it back into the rear of the instrument panel.

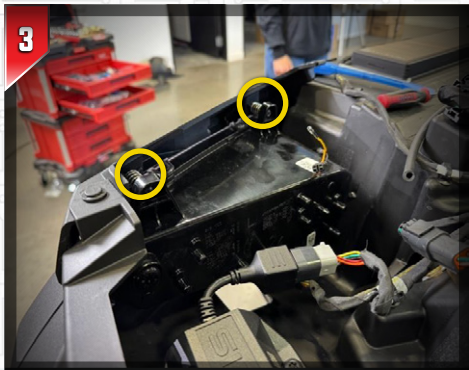


Remove the one (1) T40 bolt, one (1) T30 bolt, and four (4) push pins from both the driver and passenger-side fenders. Two (2) of the push pins are in the door jamb.

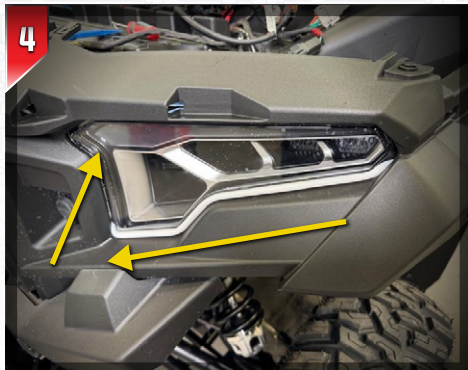


Carefully pry the fenders off. They are secured with plastic speed clips.

XPEDITION STREET-LEGAL TURN-SIGNAL KIT



Loosen the three (3) adjustment screws on the back of the headlight. Two (2) on top, one (1) on bottom. This will allow the headlight to move back, giving you enough room to feed the LED strip behind the headlight and trim panel.

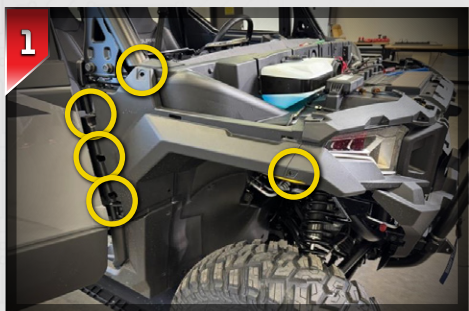


Set an LED strip between the headlight and trim panel, with the cable on the grille side of the headlight. You may need to adjust the headlight forward or backward to get the strip to fit and hold in place. Feed the extra LED strip back behind the outer headlight.

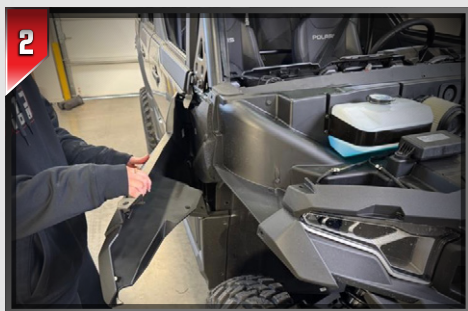


Tighten the three (3) adjustment screws to pinch the LED strip in place. Be careful not to pinch it too tightly, as this can cut the rubber. It's easiest continuously cycling between the three screws

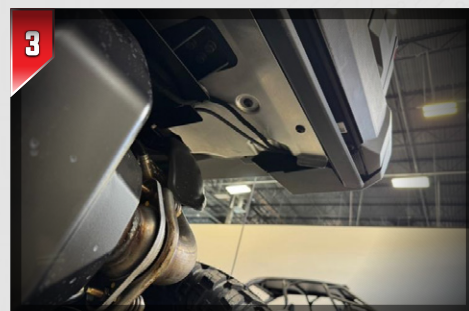
INSTALLATION — TAILLIGHT HARNESS



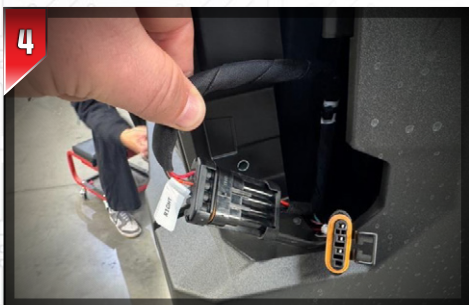
Loosen the passenger-side fender by removing the seven (7) push pins and four (4) T40 screws. Two (2) of the push pins are located in the door jamb. One above the door strap and one below.



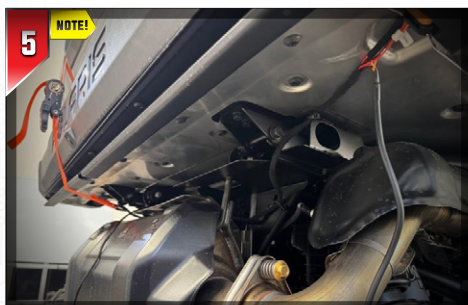
The panel can now be pulled back. It does not need to be full removed.



Grab the **B-H3112** taillight harness. Locate the passenger output plugs, then feed them up into the passenger-side taillight compartment through the bottom



Plug the matching connector from the passenger output into the factory harness you unplugged from the taillight earlier.



Run the driver-side output lead to the driver-side taillight. This lead also includes the license plate connector, so route it to where you plan to mount your license plate frame, if purchased.

NOTE! when routing to the driver-side, make sure you keep the harness clear of heated parts such as the muffler.



You'll notice the driver-side lead is not long enough. Take the **B-H3861** extension harness and plug it into the driver-side lead, then continue routing it up into the taillight compartment.



818-991-1778

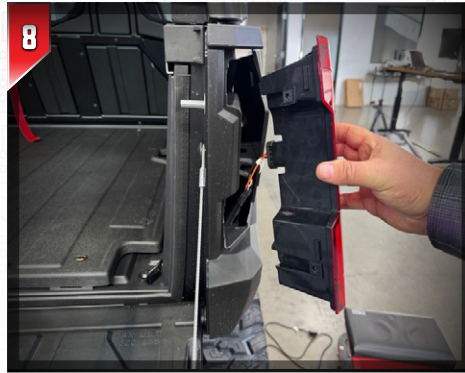
SUPPORT@SSVWORKS.COM

SWITCHWORKS
OFFROAD.COM

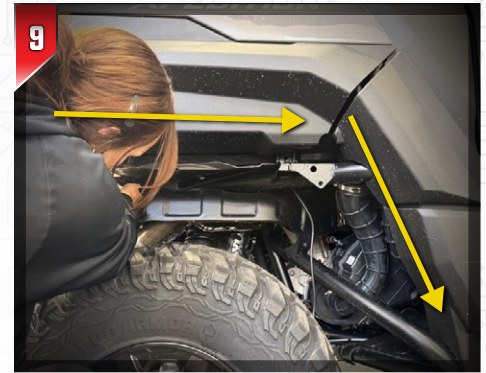
XPEDITION STREET-LEGAL TURN-SIGNAL KIT



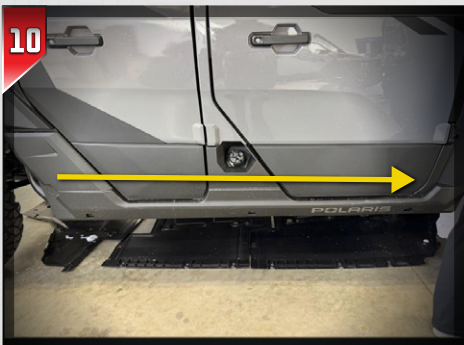
Grab the plug cap included with the taillight harness, then cap off the driver-side factory taillight harness.



Plug in and re-mount the two (2) taillights.



Now route the **B-H3112** harness toward the front of the vehicle, running it along the frame down into the rocker, securing it in place with zip ties.



Once the **B-H3112** is routed into the rocker channel, secure it along the rocker above the cross frame, continue routing it forward toward the front wheel well.

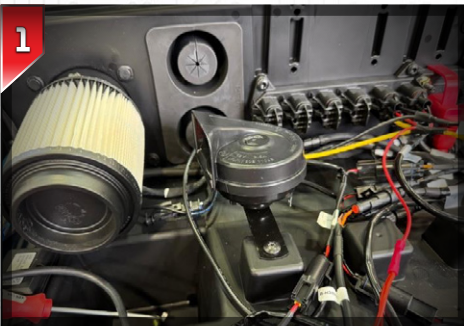


Now pull the **B-H3112** up through the front quarter panel. It may be easier to fish a guide wire down through the panel first, then use it to pull the **B-H3112** up.



Grab the second **B-H3861** extension harness, plug it into the **B-H3112**, then finish routing it to the center of the hood compartment opening. The rest of the harness will hang out.

INSTALLATION — HORN



You can now mount the horn in a location that works best for your setup. In these instructions, the horn is mounted under the hood out of the way.



818-991-1778

SUPPORT@SSVWORKS.COM

SWITCHWORKS
OFFROAD.COM

INSTALLATION – BRAIN / CONNECTIONS



1 Mount the brain in the location that works best for your setup. In these instructions, the brain is mounted to the firewall next to the bus bar using screws.

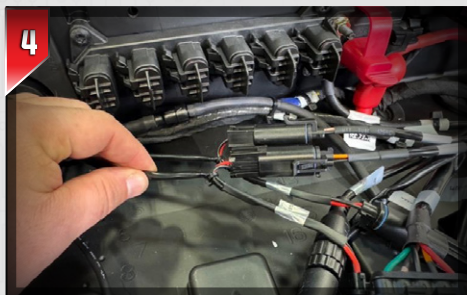


2 Take the two (2) **B-H2959** front turn signal extension harnesses and plug one (1) into each front LED strip. Then take the red accessory wire included with the LED strips and connect it to the yellow lead on each LED strip.

NOTE! If you are also installing the front round LED markers, install the Y-harness between the LED strip and the **B-H2959** extension harness.



3 Plug the main brain harness into the brain.



4 Start making connections. For the cluster indicator harness you routed earlier, plug it into the passenger and driver outputs on the main harness first. Then, using the extra pass-through connector, plug in the **B-H2959** harness. Double-check that the passenger and driver sides are connected correctly.

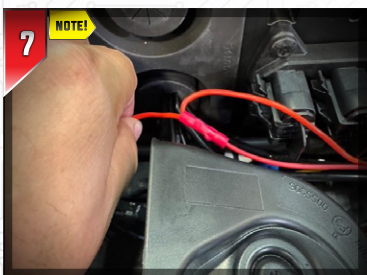


5 Plug the taillight harness and the controller into their corresponding connectors on the main harness.



6 Plug in the power input lead, then connect it to the bus bar. Do the same with the **H1475** harness.

SYSTEM TEST



7 Take the two (2) red accessory wires from the LED strips and crimp them into the red wire on the **B-H1475** harness.

NOTE! The yellow and black wires on the **B-H1475** harness are not used.



8 Connect the horn to **Horn +** and **Horn -**. Polarity does not matter, either wire can go on either terminal.

1 Turn the key and test the system. Tap once for auto cancel after 15 blinks. Hold the button for a second to blink indefinitely. Tap both at the same time to run hazards

2 Once verified to be working, tidy up the wiring and reassemble the vehicle.

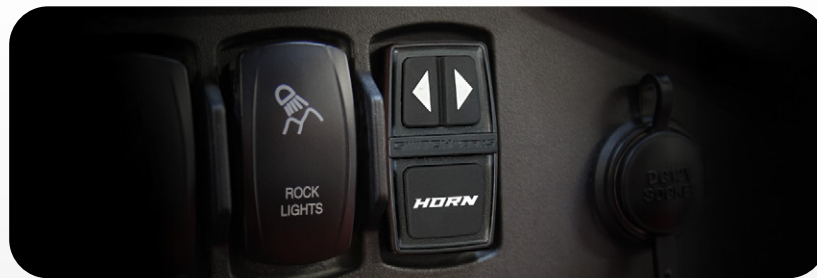


XPEDITION

STREET-LEGAL TURN-SIGNAL KIT

w/Sequential LED Turn-Signals & Taillight Integration

INSTALLATION



818-991-1778

SUPPORT@SSVWORKS.COM

SSV WORKS CORPORATE

SSV WORKS (LOCATION #2)

4610 Calle Quetzal, Camarillo, CA 93012

1212 E Venture Dr. #100, St. George, UT 84790

