

Installation Instructions: CANAM MAVERICK X3 SUICIDE DOORS Part # DS-4206

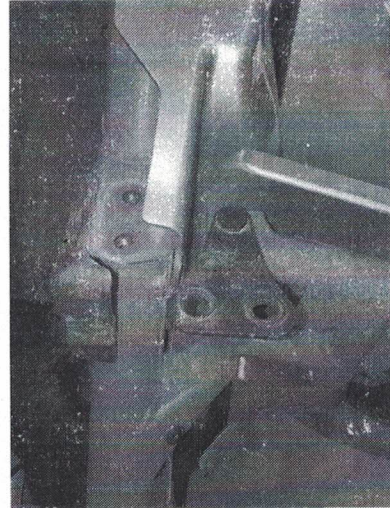
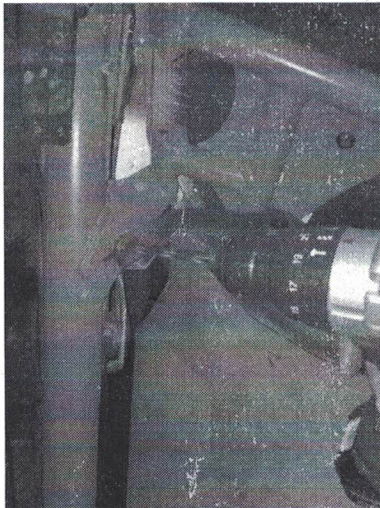
- Read and understand these instructions before installing the product
- This product does not provide roll over protection
- Ensure doors are securely latched and locked prior to operating vehicle
- Do not use product if there are any signs of damage

***** SAFETY FIRST: ALWAYS DISCONNECT THE NEGATIVE BATTERY LEAD ON YOUR MACHINE PRIOR TO PERFORMING ANY MAINTENANCE OR INSTALLATION.**

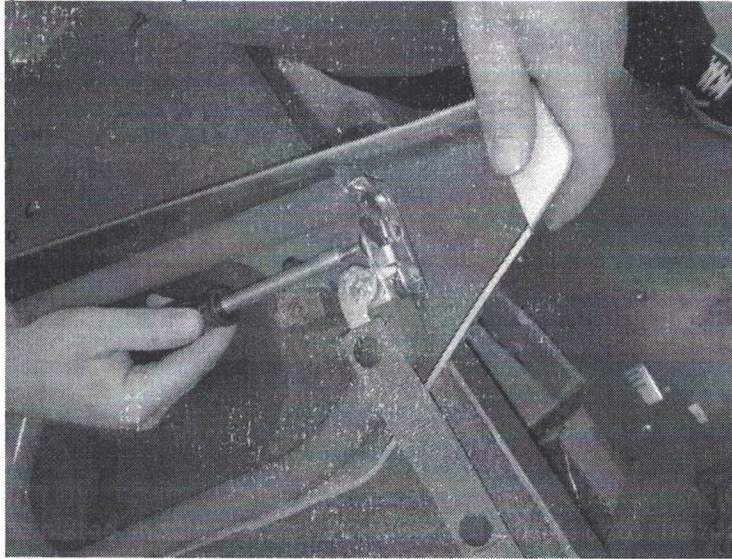
Step 1: Place vehicle on a flat and level surface. Place gear selector in "Park" and remove keys from the ignition.

Step 2: Open door and remove the door limit strap hardware from the vehicle.

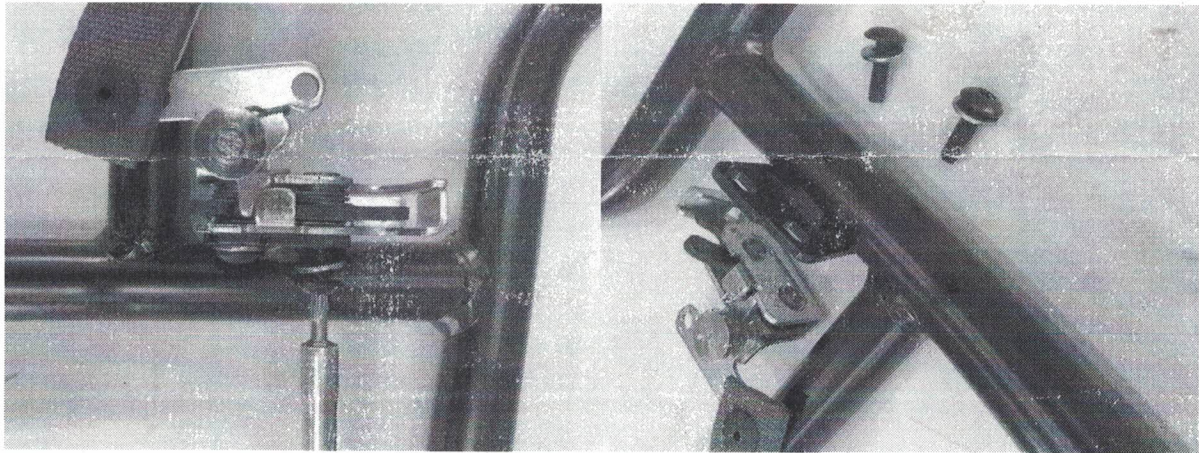
Step 3: Now close the door and remove upper door hinge bolts from mount. Remove door hinge from door, retaining the nylon washer between door and hinge. While supporting the door upwards, open the door by releasing the latch and lift the door up off of lower door hinge. Set the stock door on a work bench to prep the STOCK latch and latch pull handle.



Step 4: Once on the work bench, remove the stock door latch from the stock doors and clean and oil the mechanism lightly if necessary for smooth action. Retain the bolts

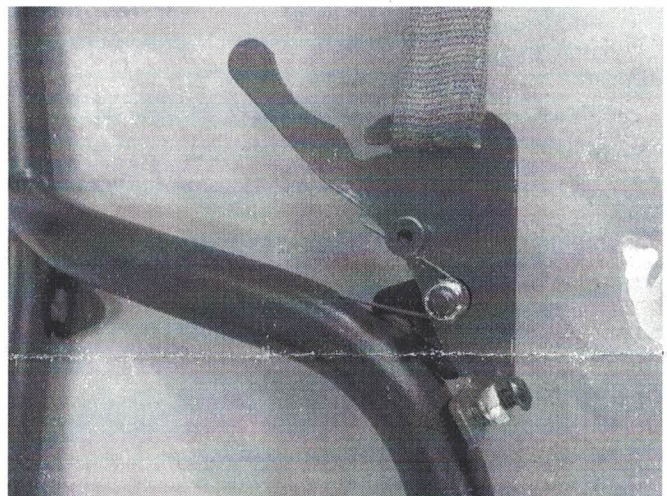
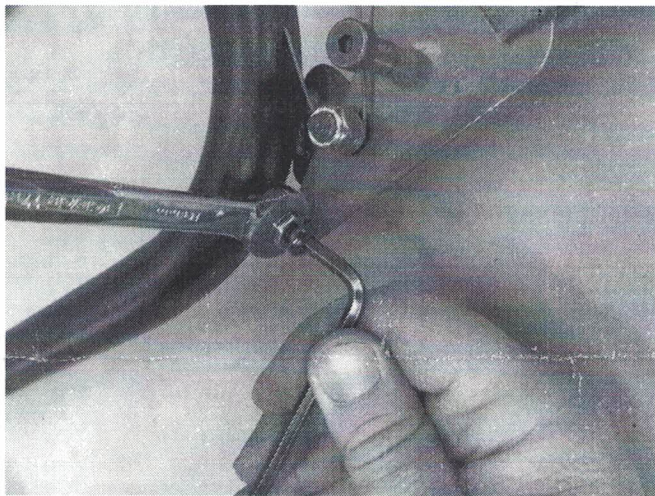
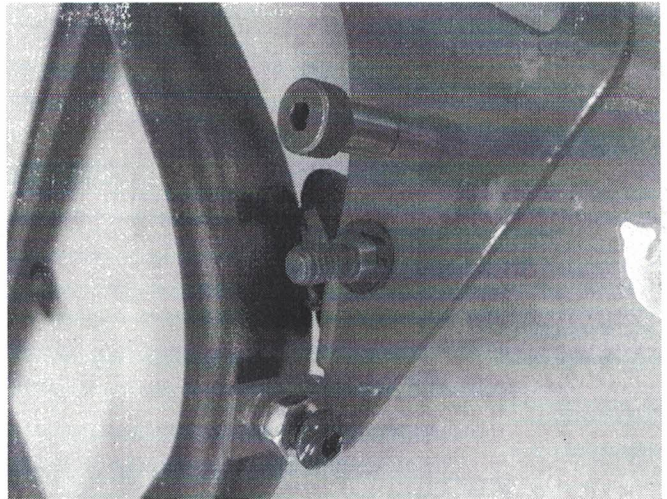
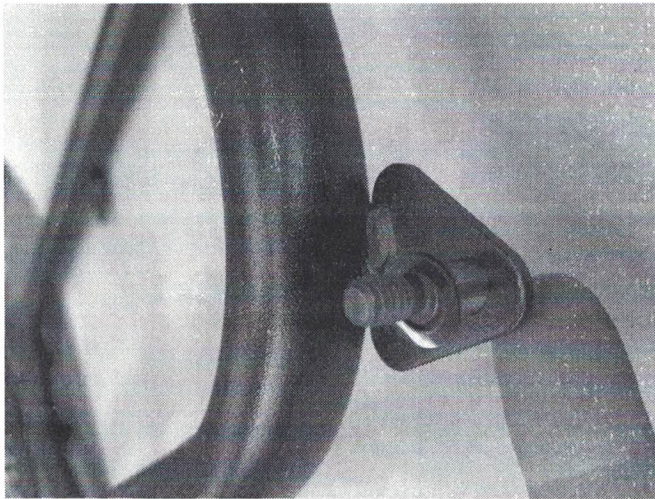


Step 5: Remount the stock door latches onto the Dirt Specialties door latch bracket using the stock bolts. Replace the stock door latch strap if loose or torn.



Step 6: Locate and mount the new red door handle to the appropriate door tab on the arm rest as seen in the photos below. Using the plated shoulder bolt, mount the red handle onto the triangle tab placing one nylon washer between the tab and handle then another on the other side of the handle, then the spring then the nut. Position the torsion spring with one leg resting on the arm rest tubing and the other on the mounted shoulder bolt on the handle. Tighten and adjust to provide a smooth sprung lever action. Slip the latch pull strap onto the handle and adjust as needed. **(SEE NEXT PAGE)**

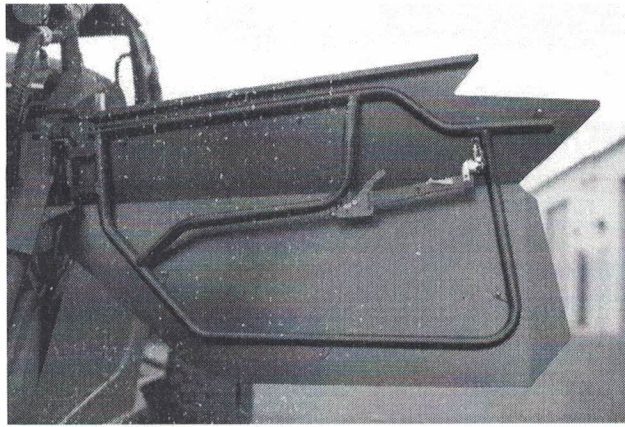
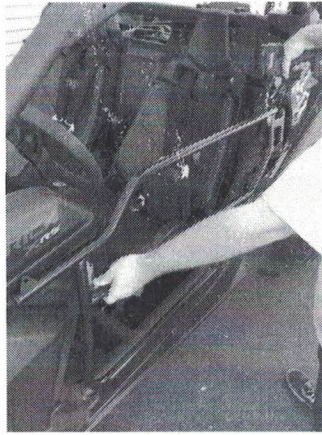




Step 7: Place your new door onto lower door hinge using new supplied nylon washers and reinstall the top door hinge and bolts loosely.

Step 8: Hold the door upwards and close the door securing the latch. Tighten the upper hinge bolts. Open the door and adjust if needed to retain a smooth opening and closing action. Tighten the bolts to factory specs. Push in the supplied plastic end caps into the door top tube.

Step 9: Mount the door skin using the supplied black allen bolts, split washers and acorn nuts. Open and close the door making any adjustments as needed.



Tips:

- After installation of doors, ride your machine through rough terrain then check fitment again. It may be necessary to make adjustments again.
- Always check fitment before and after each ride to see if adjustments need to be made and to get the longest life out of your doors.
- Over time and use, the body of your UTV may flex and alter. This may also require adjustments to be made.

CONGRATULATIONS on your install



www.dirtspecialties.com

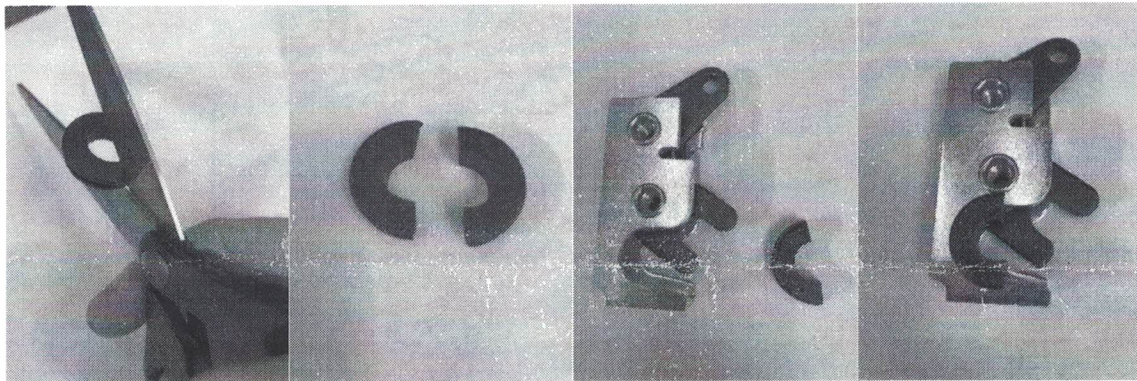


LATCH GROMMET INSTALLATION

For further dampening of the supplied latch and striker bolt combination, install this grommet to help with excessive rattling or squeaking.

STEP 1: Cut the supplied grommet in half with scissors.

STEP 2: Temporarily slip the half grommet onto the bigger latch side opening containing the spring.



STEP 3: Trim grommet on inside lip to avoid hitting the latch spring action.

STEP 4: Mount each grommet half onto each latch and center the striker bolt in the middle of the grommet.

