

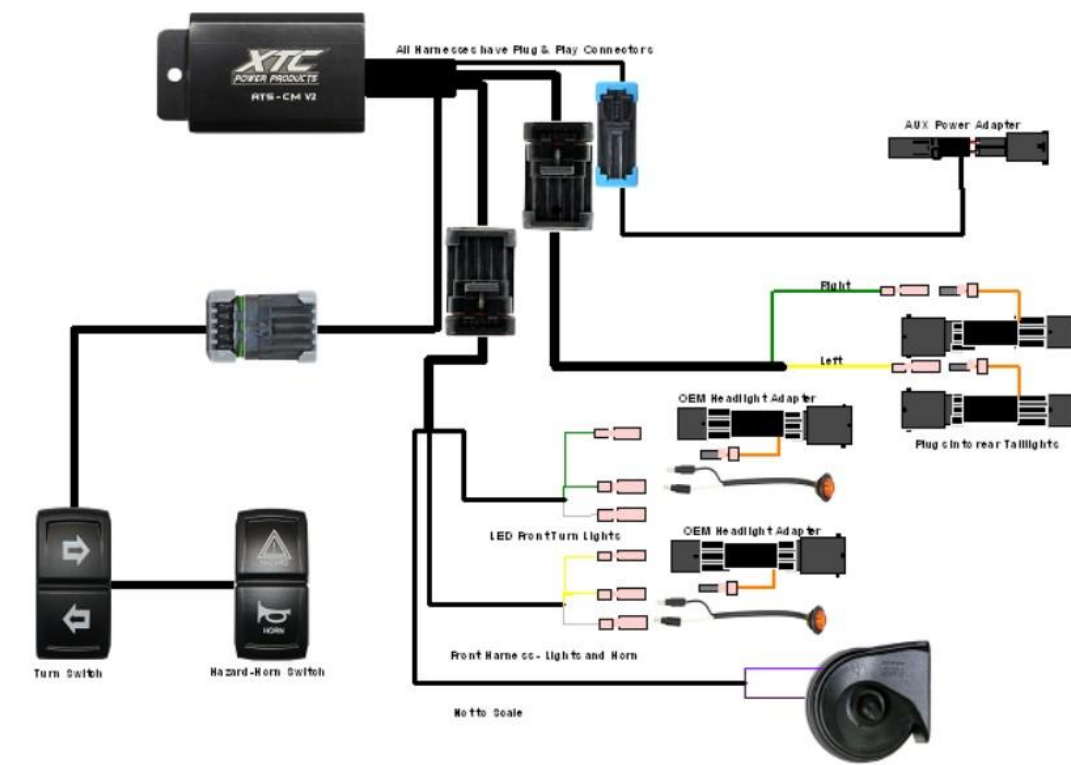


CF Moto U10 Self-Canceling Turn Signal System

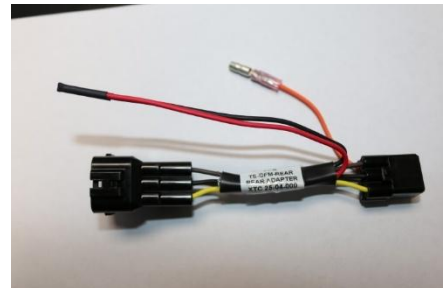
Thank you for purchasing XTC Power Products Automatic Self-Canceling Turn Signal System. Our Easy Install Turn Signal System is unique from the other kits on the market. This kit is from our Plug & Play™ product line, with only connecting power, ground and plugs into the OEM Head and Taillight Harness, utilizing the factory amber turn lights, front and rear.

Please read the instructions fully and familiarize yourself with the components before starting the installation.

See our install video on YouTube @xtcpowerproductsaz



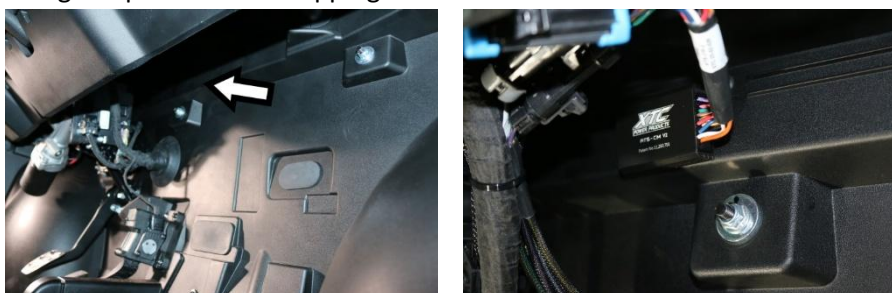
1. Install Rear Adapters- Remove the screws holding the top of the fender, push down and pull open enough to reach inside to the light, unplug the taillight and plug the rear adapter in, do the same for the other side. One of the adapters has a red and black wire for power to an optional license plate frame.



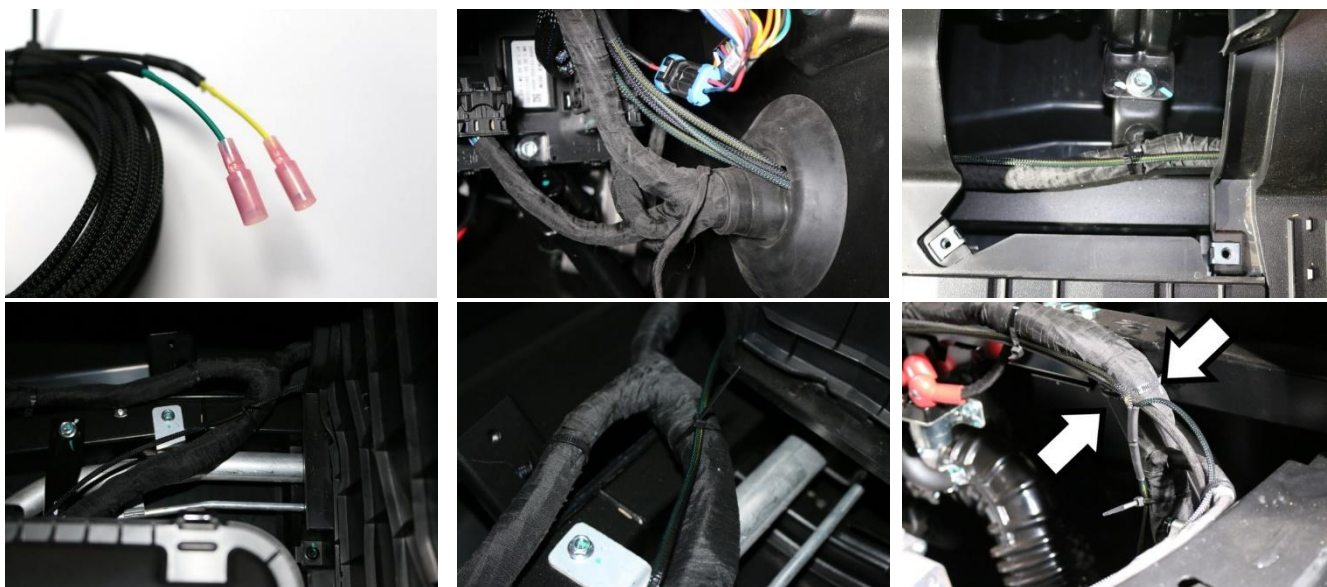
2. Remove the front center floor access panel and the front bottom small skid plate.



3. Using the provided Self Tapping Screw mount the Control Module on the fire wall under the dash.



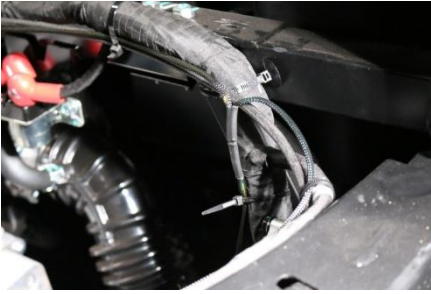
4. Unroll the long harness with the yellow and green wires, plug it into the control module, push the wire with female bullet connectors through the rubber grommet, go under the front of the car and reach up and pull the harness through. Remove the front small skid plate. Run the wires from the front through the center driveline cover to the rear engine compartment upper passenger side following the factory harness, make sure to keep it away from the front drive line and secure it using the included cable ties. **NOTE: it makes it easier to run if a flexible rod is used to pull harness through the center.**



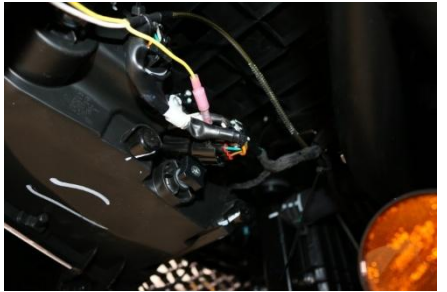
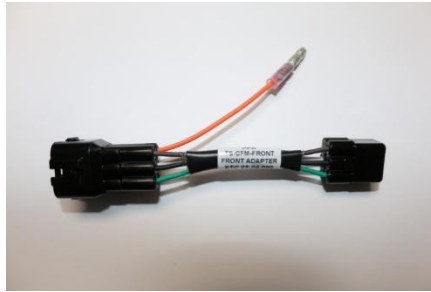
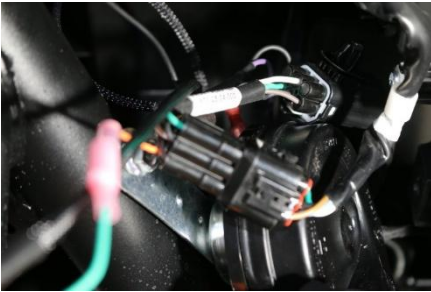
5. At the rear harness split, shown above right, run the yellow wire along the back of the cab following the factory wire harness to the rear left side adapter that was plugged in, plug the yellow wire into the adapter's orange wire connector.



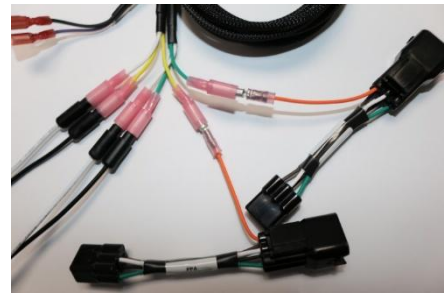
6. Run the green wire to the passenger side taillight, follow the factory harness, secure harness with provided cable ties. Plug the green wires into the previously installed adapters orange wire.



7. Install the front adapters to use the factory amber turn lights. Unplug each headlight and plug the adapters in-line.



8. Since the car has factory turn signal lights, the LED lights provided are optional. Decide where to mount the turn lights and verify there is clearance behind panel before drilling. Install the Front LED Turn Lights, the front LED Turn Indicators can be mounted with the rubber grommet or without. If the grommet is **not** being used drill 5/8" holes. If the grommet is being used drill 3/4" holes. Remove and install the rubber grommet from the LED into the hole if used. Insert LED into the grommet or hole with the **TOP** marking up. NOTE: the **TOP** marking is on the front of the LED lens.



Run the front harness. Plug the front harness into the control module. Run the wires through the fire wall grommet. Run the connector with the two green wires to the right-side LED turn light along with the violet horn wires. Run the connector with the two yellow wires to the left-side LED turn light. Connect the green wire to the right black LED wire and yellow wire to the left black LED wire and white to white on both, plug the adapters orange wire into the front harness connectors on both sides. **NOTE: The Black LED wire is positive and goes to the yellow and green wires, they will not work if reversed, white is ground. Secure the Harness using the provided cable ties.**



9. Install the Turn Switch and the Hazard Horn Switch – There are several places the Switches can be mounted. Remove the switch plugs or using a sharp box knife cut out the rectangle. Push the switch Connector and wires through and apply grease and attach to switch and install in dash.



Dielectric Grease - Just like the OEM uses on their switches, we recommend using Dielectric Grease on all switch terminals, this keeps the water out, thereby reducing corrosion and helps increase reliability! Open the grease and put on the switch terminals and the connector terminals on the Horn switch.

10. Run the large connector from the switches over to the Control Module and plugin.



11. Install Power Harness. Unplug the AUX power connector under the dash, plug our adapter into it and then plug back into the power outlet. It goes inline. Plug the other two pin connector into the ATS-CM control unit.



12. Mount Horn. Under the right front fender is a ground bolt on the frame, remove the bolt and mount the horn using the factory bolt as shown below. Attach the Violet and Black wires to the horn terminals, polarity does not matter.



13. Verify operation. The System uses momentary switches to activate. Push up on the Lever for Right or down for Left accordingly. You can cancel the signal at any time by pushing the activated Lever a second time or it will cancel as follows:
- Push 1 Second for Lane Change, will stay on approx. 8 Seconds / 10 Flashes
 - Push 2 Seconds for Slowing to Turn Corners, will stay on approx. 20 Seconds / 30 Flashes
 - Push 5 Seconds for Traffic Lights when stopping and waiting, will stay on approx. 75 Seconds /110 flashes
- The Systems Automatic Self-Cancelling may be overridden/Shut Off at any time by pushing the activated switch.
- Hazard Lights - press to activate and press again to deactivate, it does not self-cancel.

14. Secure all installed cables with supplied cable ties making sure they are away from any hot or moving parts.

15. re-install vehicle parts

Install video can be seen on YouTube @xtcpowerproductsaz

We can be reached by email at support@xtcpowerproducts.com

XTC Power Products
A Division of XTC Motorsports LLC
380 E Comstock Dr.
Chandler AZ 85225
480-558-8588
www.xtcpowerproducts.com

*Disclaimer: This kit is intended for off road use only and XTC Motorsports claims no responsibility for its use. It is up to the purchaser to make sure it complies with all Federal, State and Local laws. R1